

CO-OP'S LIGHT TOUCH SHOWS CUSTOMERS THE WAY



A.G.K. Ltd., the leading Parking Guidance Information System supplier, has recently completed its first international installation of the *Signal-Park* bay-specific solution at the **'Grand Marche' Multi-Storey Car Park** in St. Helier, Jersey, in the Channel Islands.

The new system was installed as part of an overall refurbishment by the **Channel Islands Co-operative Society** of this very busy centre which involved the extension of the retail store to the first floor of the car park. This meant that the car parking capacity of the centre reduced from over 500 spaces on 4 floors to 390 spaces over 3 levels, putting increased pressure on demand for customer parking at the facility. Facilities Manager for Channel Islands Co-op, **Mr. Warwick Cooper**, explains that:

"with the reduction in car park capacity resulting from our store extension, we chose the Signal-Park system to ensure that the highest level of customer service for drivers visiting our centre could be maintained by ensuring the remaining parking spaces could be utilised as efficiently as possible and that available spaces would be identified for our customers as quickly as possible. In addition, we are using the 'Over-Stay Parking' feature of the system as an invaluable tool in our enforcement of the parking controls at this centre to ensure that the limited parking spaces are not being abused by commuters and other non-centre customers"

The Grand Marche PGI system highlights available spaces to customers via a double green LED indicator light arrangement, and also incorporates distinctive blue indicator lights to highlight 'Parent & Toddler' parking spaces. Parking spaces which have been occupied for in excess of the maximum limit, i.e. 2½ hours, are easily identified by an orange indicator light.

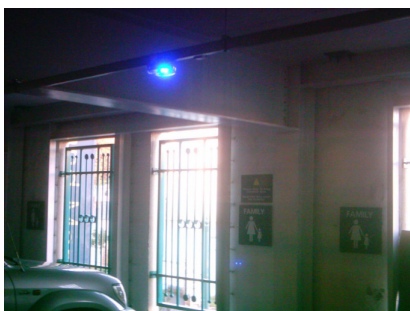
The new system went live, in conjunction with the opening of the new 'Homemaker' store on what was previously the first floor of the car park, on the UK bank holiday, Monday the 30th August 2010, and has been working very well in catering for the increased customer demand for the reduced number of parking spaces. As part of the system launch, explanatory leaflets (copy attached) and signage were produced for customers of the centre.



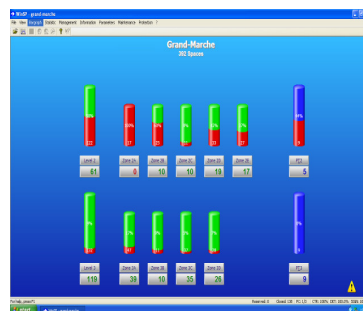
Grand Marche Centre- St. Helier



Parking Bay Sensors & Guidance Signs



Parent & Toddler Parking- Blue Indicator Light



Management Software GUI Screen