

Parking Guidance System Installed in Kilkenny City Centre

March 2011



Approach Route Electronic Information Display

Kilkenny Borough Council has recently installed the first phase of a large-scale Urban Area Parking Guidance Information System for Kilkenny city centre. The system was designed to provide an enhanced driver experience of Kilkenny City by providing real-time parking information on all approaches to the city centre, and was supplied and installed by A.G.K. Ltd.

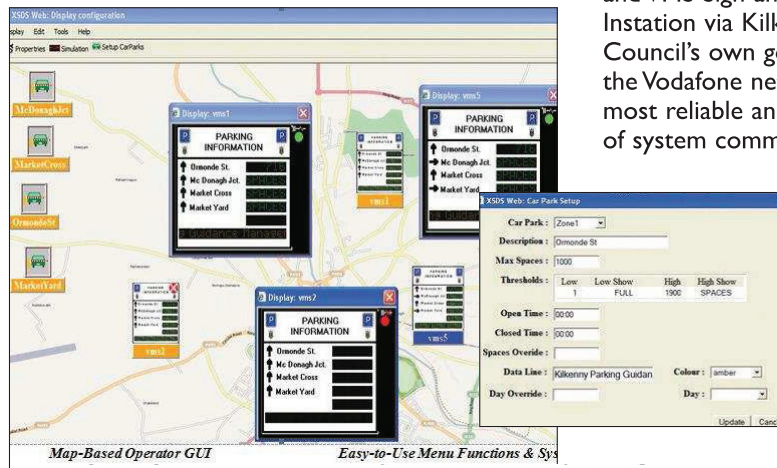
The system was designed to provide Parking Guidance Information (PGI) for almost 3,000 parking spaces across 4 Car Parks within the City Centre area.

Car Park Operator	Capacity	
Market Yard	Kilkenny CC	465
Market Cross	Market Cross	583
MacDonagh Jct	Q-Park	1150
Ormonde Street	Q-Park	780

Each of the car parks within the system has been equipped with the CP-600 Car Park Controller which interfaces with the existing automated access control systems at each car park to perform the vehicle detection function for the system, enabling the calculation of real-time parking space availability information.

The very large (c. 3mHX2.5mW) electronic signs were designed to include an additional LED module for future additional parking facilities to be accommodated on the system. All of the signs include a scrolling 'Free Text' LED module which enables the city council to transmit critical traffic and related information to drivers in a timely and effective manner. The 'Free Text' LED modules feature dual colour functionality (red and amber) and are used to provide both event and incident information. The dynamic Parking Guidance Information modules are also dual colour displays, however in this instance the colours are used to highlight the status of the car parking availability (green for spaces or open and red for 'CLOSED' or 'FULL').

In the first phase of deployment of the system, the displays are installed on three key approach routes to the



City Centre, i.e. the Hebron Road, the Castlecomer Road, and the Waterford

“...user-friendly and effective means of communicating with drivers.”

Road. It is planned to install a further 4 displays (at the Dublin Rd., Freshford Rd., Callan Rd., and Bennettsbridge Rd. approach routes) in the near future in the second phase

of the system installation.

The PGI management software is installed on a server within the Kilkenny Borough Council offices and is accessible to operational staff via an internet browser behind the network firewall. The GUI consists of a map of the city with icons indicating the location of each sign and car park. The system is self-diagnosing and monitors the health status of all elements of each sign and car park controller unit. Should an issue arise with any element the relevant icon on the GUI displays a red X and the operator can interrogate the system to resolve any such issue.

One unique feature of the installed system is the wireless communications backbone operating the system. It was decided to implement the communications between each Car Park Controller and VMS Sign and the management Instance via Kilkenny Borough Council's own government APN on the Vodafone network to ensure the most reliable and cost-effective means of system communications.

Speaking after the launch of the new system, Mark Devereux, Town Engineer for Kilkenny Borough Council, stated that “the new electronic parking information

system is a key element of the ITS infrastructure for Kilkenny City Centre and it provides us with a very user-friendly and effective means of communicating with drivers using the road network around the city centre. The real-time parking guidance information element of the system will certainly enhance motorists experience of the facilities available within Kilkenny and enhance the usage experience for visitors to our city centre”.

INFOLinks
www.agkdisplays.com
www.kilkennycity.ie